

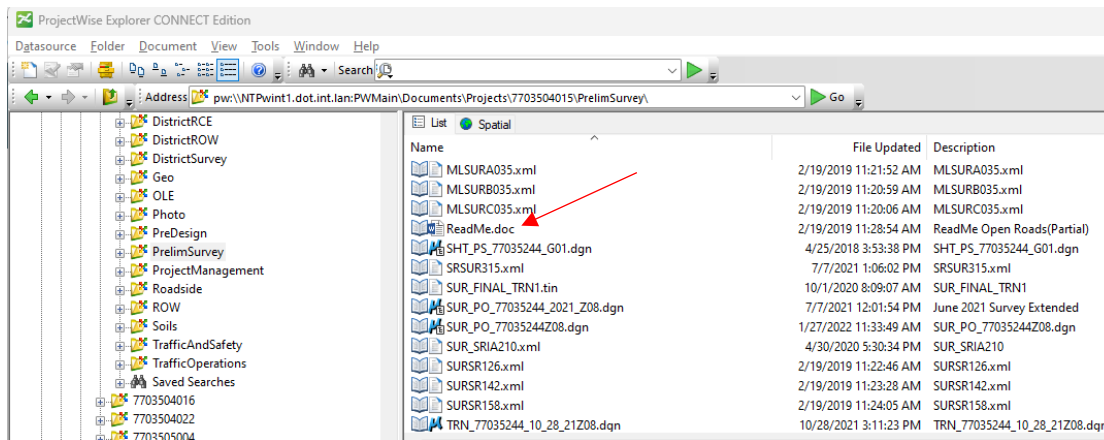
Typical Referenced Files Used for Bridge Bureau OBM & ORD Projects

For Iowa DOT Bridge Bureau projects using OpenBridge Designer /OpenBridge Modeler (OBD/OBM) or OpenRoads Designer (ORD), the following information is to explain the basic files that are referenced. The main files needed to create a bridge or culvert model are the roadway alignment (GEO) and the existing (TRN_EX) and proposed terrains (TRN). This document shows where to locate these files in ProjectWise. These files are to be used as references and not copied as live/active elements into the OBD/OBM or ORD files.

EXISTING TERRAIN

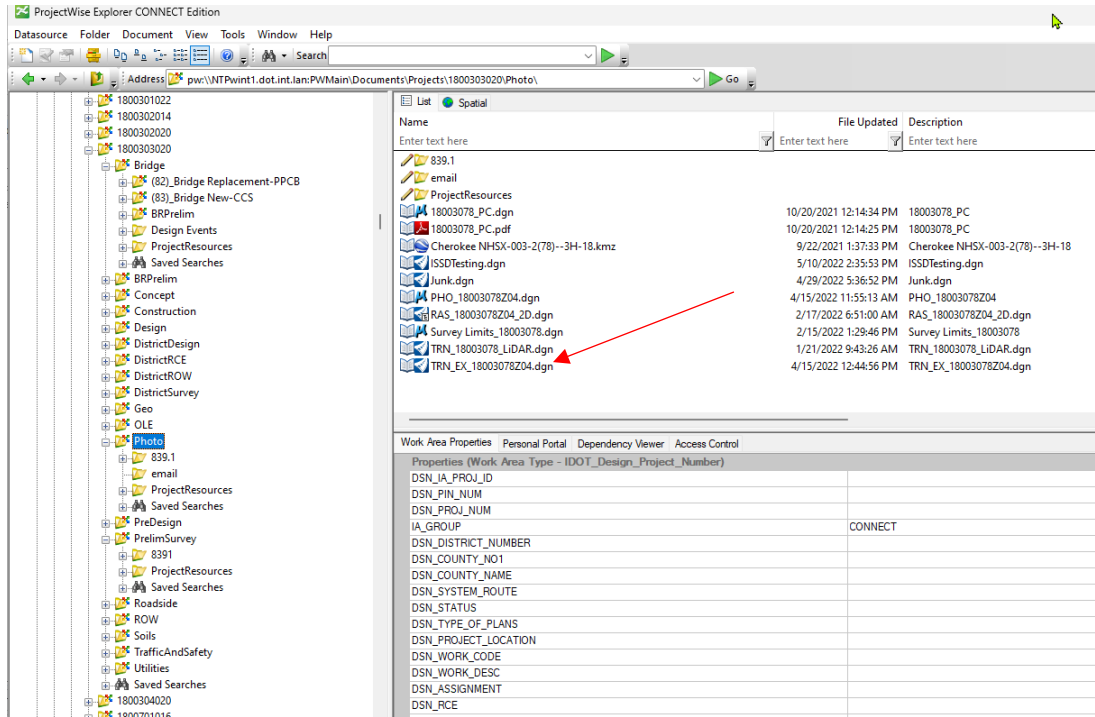
To find the Existing Terrain file, it could be in three different locations depending on who generated this information. Because of the three possible ways the existing ground can be surveyed, there are three locations as described below to locate the TRN_EX file. **The file should only reside in one of the locations, not more than one.**

Refer to the ReadMe.doc file located under the PrelimSurvey folder for project survey information.

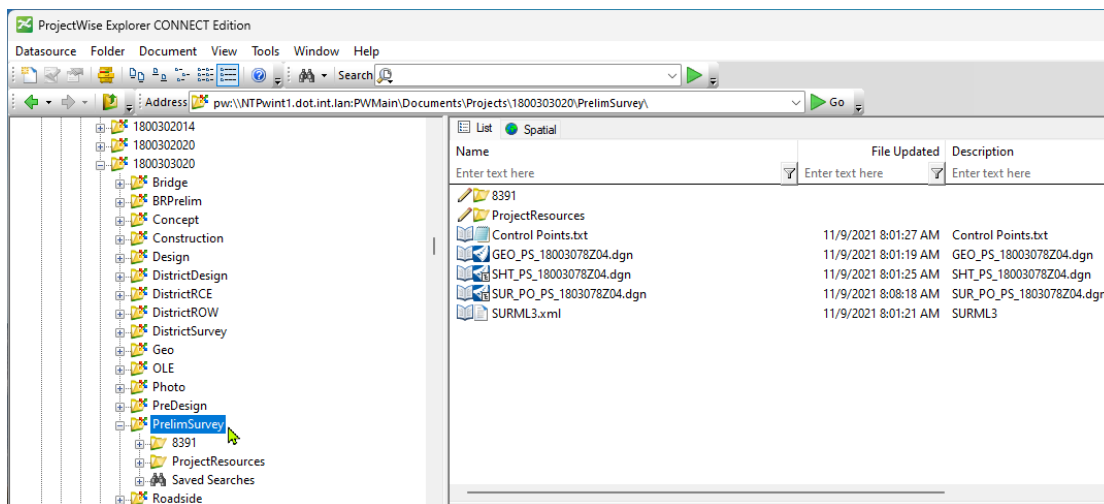


- 1. Photo folder** - When the existing ground is processed by both photogrammetry and prelim survey, the TRN_EX file will reside in the Photo folder.
- 2. PrelimSurvey folder** - If the existing ground is processed by a full field survey without photogrammetry, the TRN_EX file will reside in the PrelimSurvey folder.
- 3. DistrictSurvey folder** - If the survey was completed exclusively by a district survey section, the TRN_EX file will reside in the DistrictSurvey folder.

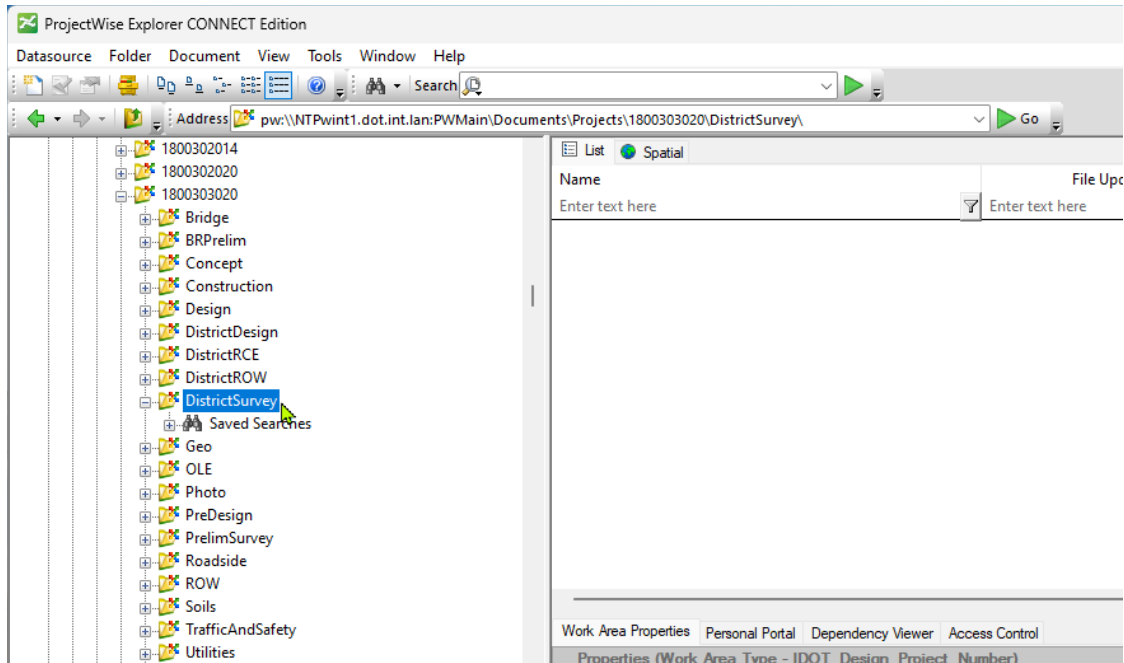
The image below is an example showing the 1st location an Existing Terrain file may be found, the **Photo** Folder. The file should not be referenced from Subfolders. The information in the Subfolders may not be ready for consumption/utilization. To avoid using data that might not be correct, always reference data from the **Photo** folder only, not subfolders.



The image below is an example showing the 2nd location an Existing Terrain file may be found, the **PrelimSurvey** Folder. The file should not be referenced from Subfolders. The information in the Subfolders may not be ready for consumption/utilization. To avoid using data that might not be correct, always reference data from the **PrelimSurvey** folder only, not subfolders.



The image below is an example showing the 3rd location an Existing Terrain file may be found, the **DistrictSurvey** Folder. The file should not be referenced from Subfolders. The information in the Subfolders may not be ready for consumption/utilization. To avoid using data that might not be correct, always reference data from the **DistrictSurvey** folder only, not subfolders.



The following is to show the possible locations of files providing the Proposed Terrain, Geometry and Corridor. The files may be in various locations and communication is necessary to confirm the actual location on a project-by-project basis.

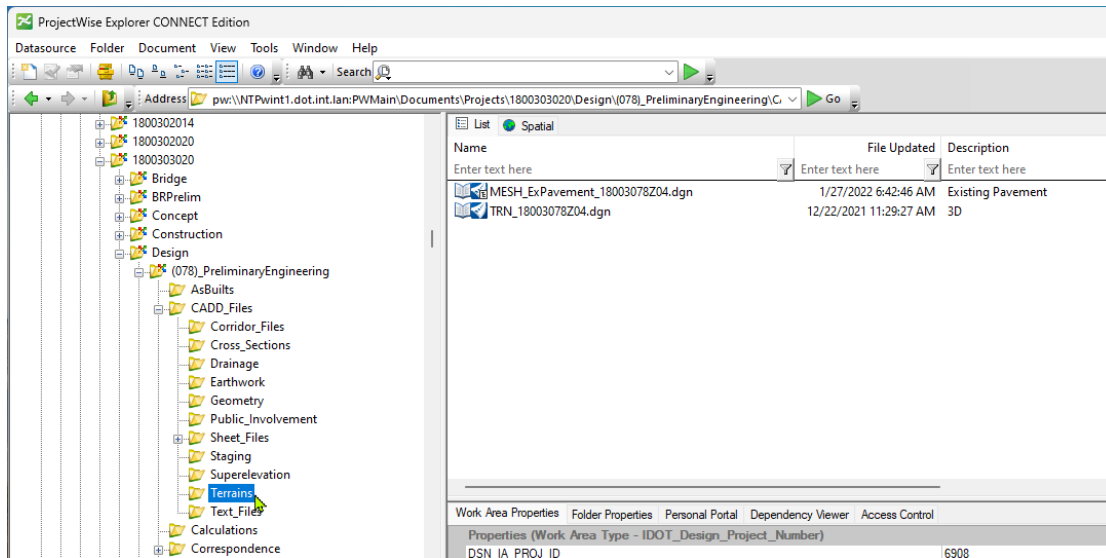
PROPOSED TERRAIN

The Proposed Terrain can be in two different locations depending on who is responsible for the Road Design work (Design Bureau or District Design).

Proposed Roadway Terrain will be provided by the Roadway Designer.
 Proposed Berm Modeling will be provided by the Prelim Bridge Designer.

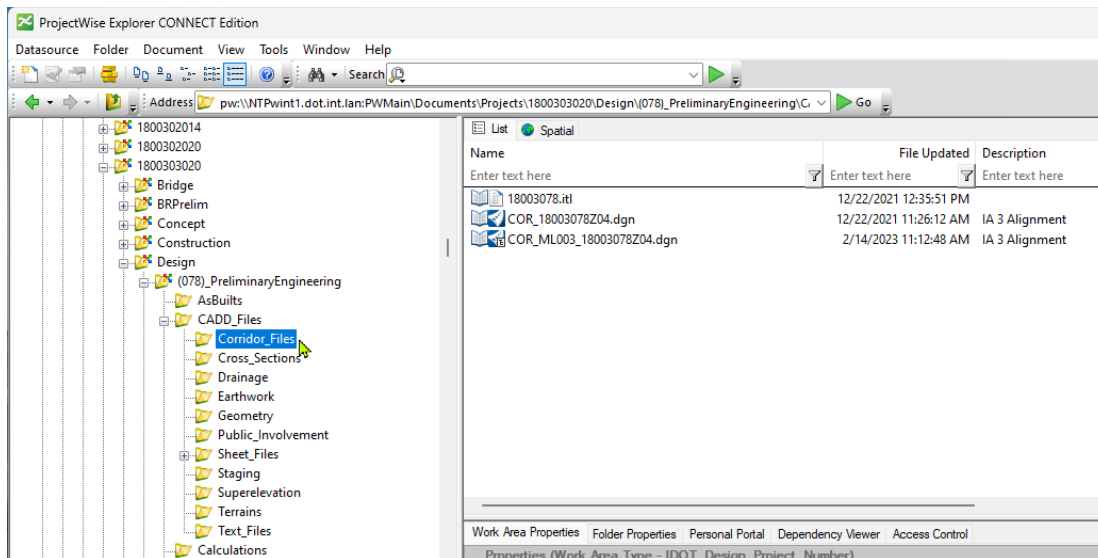
The Proposed Terrain (the clipped terrain for proposed contours) will be generated by whomever creates the proposed corridor modeling. The Structural Designer shall work in collaboration with the Road Designer to create the proposed terrains.

The image below is an example showing the location of Proposed Terrain file.



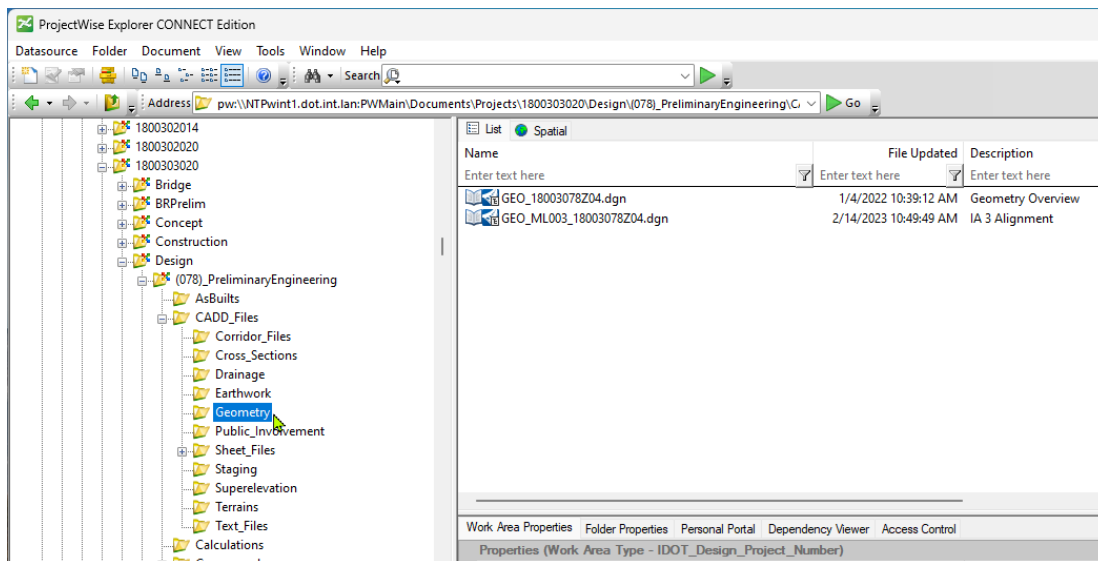
PROPOSED CORRIDOR

The image below is an example showing the location of Proposed Corridor file.



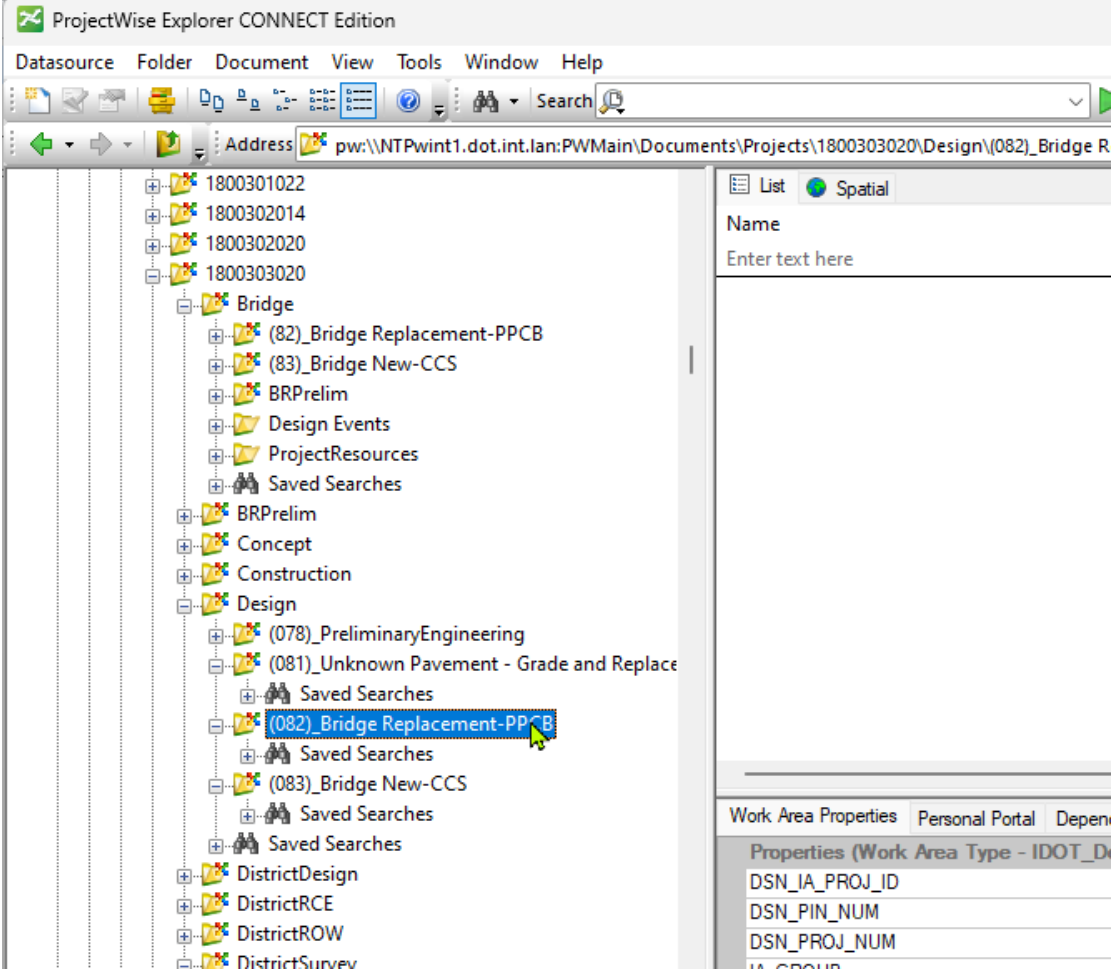
PROPOSED GEOMETRY

The image below is an example showing the location of Proposed Geometry file.



The Proposed Corridor, Geometry and Terrain files may be located in the **Design\(\Paren)_Work Description** folder.

The image below is an example showing possible location of Proposed Corridor, Geometry and Terrain files.



District Design Files

When the District is responsible for the Proposed Corridor, Geometry and Terrain files, the files may be in various locations. Communication with the District Designer is necessary to confirm the actual location on a project-by-project basis.

The image below is an example showing the default DistrictDesign folder structure.

